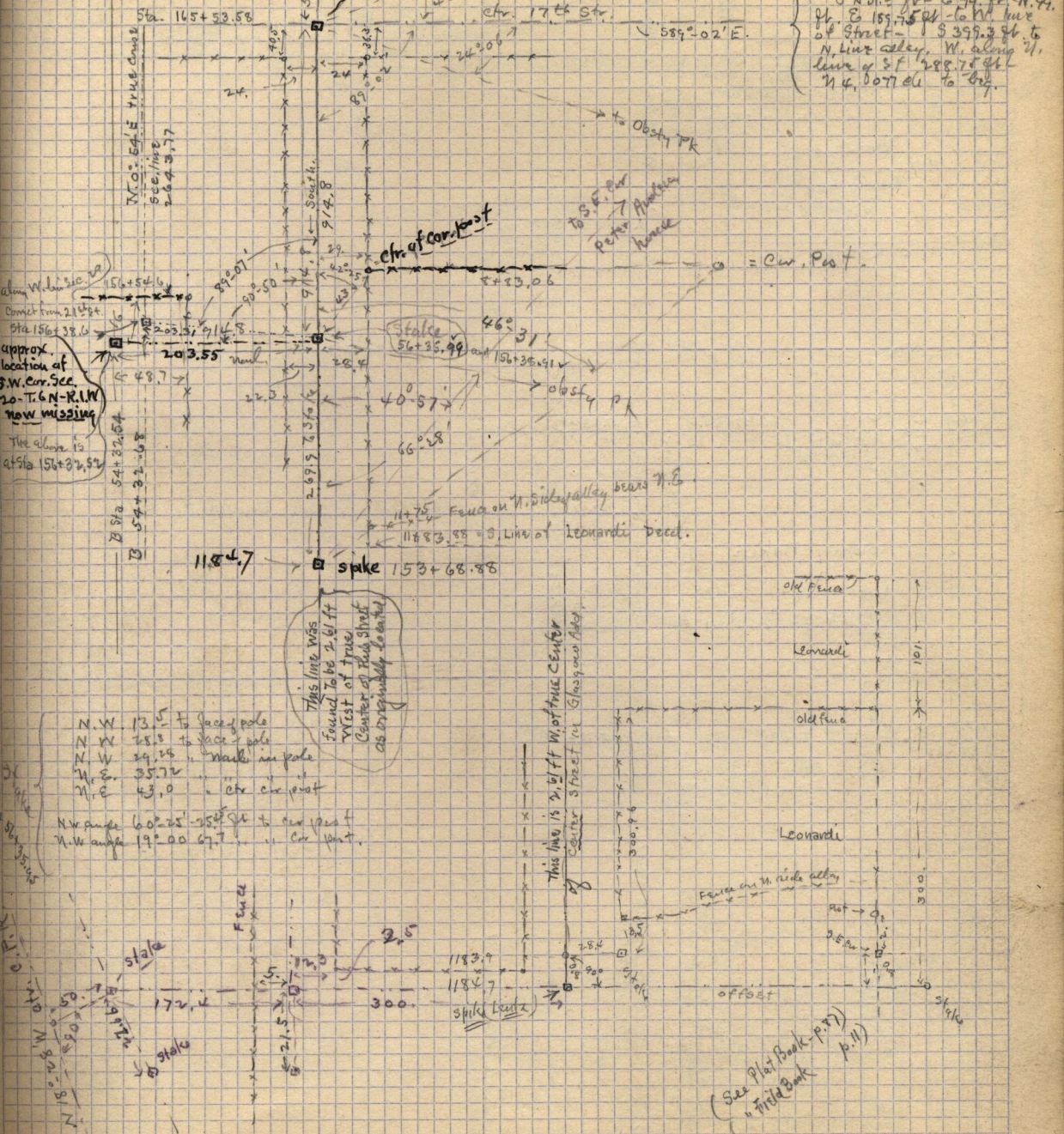


Ticks to Spike in ctr.
 17th Str. and Center Street
 at Sta. 165+53.58 & 56+20.55
 S.E. 42.8 face of pole
 S.W. 46.8
 N.W. 51.0
 N.E. 97.56
 "N.E. cur. Finawille,
 Tel. pole

Survey for
 Louis Leonardelli in
 S.W. 1/4 Sec. 20, T. 6 N -
 R. 1 W
 Description - Bm. 220, 67 ft
 end S.W. cur. ad 1/4 sec.
 O.N. 3 ft - E. 99 ft - N. 99 ft
 of E. 189.75 ft - to N. line
 of Street - \$399.50 ft. to
 N. line alley, W. along N.
 line of S.F. 288.75 ft
 N. 4, 007 ft. to Bm.



Corner from 218 ft.
 Sta 156+38.6
 approx. location of
 S.W. Cur. Sec.
 20 - T. 6 N - R. 1 W
 now missing
 The above is
 at Sta 156+38.6

N.W. 13.5 to face pole
 N.W. 28.8 to face pole
 N.W. 29.24 to mark on pole
 N.E. 35.72
 N.E. 43.0 cur. cur. post

N.W. angle 60° 25' - 35' to cur. post
 N.W. angle 19° 00' 67' to cur. post

This line was
 found to be 2 1/2 ft
 west of true
 center of this street
 as originally located

This line is 2 1/2 ft W. of true center
 of Center Street in Glasgow area.

(See Plat Book p. 97)
 " " " " p. 111

March 10 - 1910
 Survey for J. Tracy